

Plans For Building Whiz Flash-Burn's Way Cool Technicolor Barbecue Table



Introduction

Thank you for your interest in building the world's most popular table for Big Green Egg cookers! (We just made that up.) These plans are not a complete set of directions. They are meant to accompany the narrative located on our web site at:

<http://www.nakedwhiz.com/cart.htm>.

You should read and understand the information contained at that location in conjunction with the information contained in these plans.

Disclaimers

The dimensions on these plans have all been provided to the best of our ability, however, we did have to measure our table after the fact. So, some dimensions may be approximate and you should test fit and measure carefully when building your table. We do not recommend cutting pieces of wood to the exact dimensions listed in the materials list without first measuring and test fitting during construction.

Please be careful when you use power tools to make this project. We do not advocate any dangerous practices or shortcuts, regardless of anything you may see on our web page showing how we built this table.

Scaling the plans for other size cookers

The plans show the appropriate measurements to construct this table for Large, Medium and Small Big Green Egg cookers. If you wish to alter the plans to make a table for an XL Big Green Egg, you will need to make major alterations as the depth of the table must be adjusted to 32", the hole in the top surface must be 26-1/4", and Dimension "X" (see page 7 of the plans) must be 12-1/2".

What are all those holes for?

Obviously, the large round hole in the top surface is for the cooker. Obviously.

The 18-1/8" inch square hole in the top surface is for an 18"x18" tile. This will give you somewhere to set hot pans or other items that you don't want to set on the wood. You can use whatever material suits you. You could use a square sheet of slate, a square sheet of granite or other counter-top material, or whatever.

The 18" x 24" inch hole in the lower shelf is for a sheet of slate to go under the cooker. See the photo on the title page to see what goes in each opening.

Master Materials List

The materials required for each page of the plans are listed on those pages. Here is a master list for the project. We started with about 45 board-feet of 4/4 red oak, S2S and 10 board-feet of 8/4 red oak, S2S. If you go to a lumber yard, you should ask for "Four quarter" and "Eight quarter" oak, "surfaced two sides":

Table Top

2 – 4" x 7/8" x 57"
2 – 4" x 7/8" x 6-3/4"
2 – 4" x 7/8" x 32-1/8"

Upper Frame

2 – 4" x 7/8" x 55"
6 – 4" x 7/8" x 22-1/4"
2 – 4" x 7/8" x 18-1/8"
4 – 2" x 7/8" x 1801/8" for the cleats

Lower Shelf (Option "A")

2 – 4" x 7/8" x 57"
4 – 4" x 7/8" x 30-1/8"
4 – 4" x 7/8" x 8-3/4"

Lower Shelf (Option "B")

1 – 4" x 7/8" x 57"
4 – 4" x 7/8" x 30-1/8"
5 – 4" x 7/8" x 8-3/4"

Lower Frame (Option "A")

2 – 4" x 7/8" x 55"
6 – 4" x 7/8" x 22-1/4"
2 – 4" x 7/8" x 18-1/8"

Lower Frame (Option "B")

2 – 4" x 7/8" x 55"
6 – 4" x 7/8" x 22-1/4"
3 – 4" x 7/8" x 18-1/8"

Legs

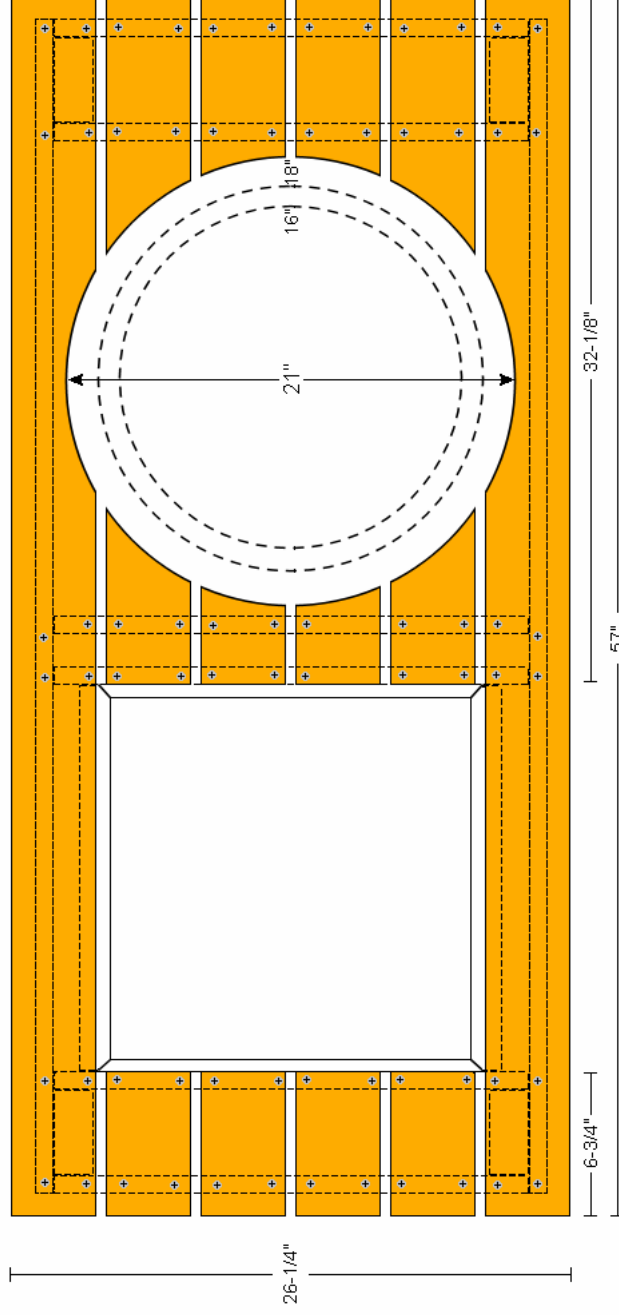
2 – 4" x 1-7/8" x 31-1/2"
2 – 4" x 1-7/8" x 30-1/2"

Miscellaneous Items

2 – Home Depot 10" Hand Truck Tires
1 – 36" x 5/8" threaded rod
Assorted washers and nuts to install tires.
1 – 18" x 18" tile
1 – 18" x 24" sheet of slate
1 lb 1-1/2" SS Phillips head screws
1 lb 2-1/2" SS Phillips head screws
Wood glue
Minwax Helmsman Spar Urethane

A word about the screws. We are trying to remember what we did for screws. On our web page we list both 1-1/2" and 2-1/2" galvanized deck screws. However, we know we ended up using stainless steel screws. We think we used the longer screws wherever we were screwing into the end grain of a board, such as in assembling the upper and lower frames. We probably used the shorter screws otherwise, such as when screwing the top shelf boards onto the frame.

Top View of Table Top



Notes:

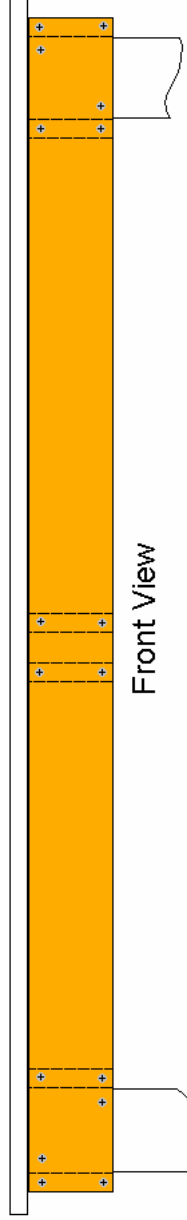
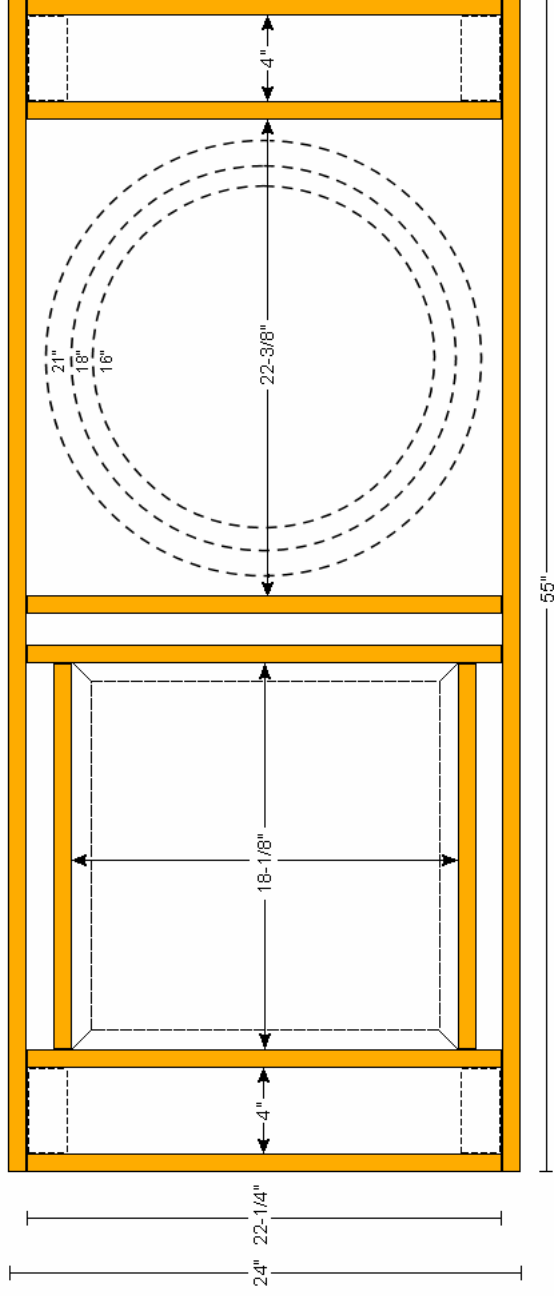
1. Measurements are approximate. Unfortunately, we are drawing these plans after the fact. You may need to test fit some pieces.
2. All those dotted lines show the frame immediately beneath the table top. Those little gray circles with the crosses on them are the stainless steel phillips head screws.
3. The dotted circles show the alternate cutting locations for the hole if you are going to build this table for a medium or small cooker. The hole should be 21" for a large, 18" for a medium and 16" for a small. The center of the hole will be approximately 13" from the front edge and 17-7/8" from the right edge.

Materials list (this page only):

- 2 - 4" x 7/8" x 57"
- 4 - 4" x 7/8" x 6-3/4"
- 4 - 4" x 7/8" x 32-1/8"
- 72 stainless steel phillips head screws

Upper Frame

Top View



Front View

Notes:

1. The dashed circles are for reference only. They show where the opening in the top shelf will be cut for large, medium and small cookers.
2. The four cleats that go inside the 18-1/8" square are also just shown for reference. They are fit later and are recessed below the top of the frame to a depth appropriate for whatever you use to fill the hole (tile, etc.).

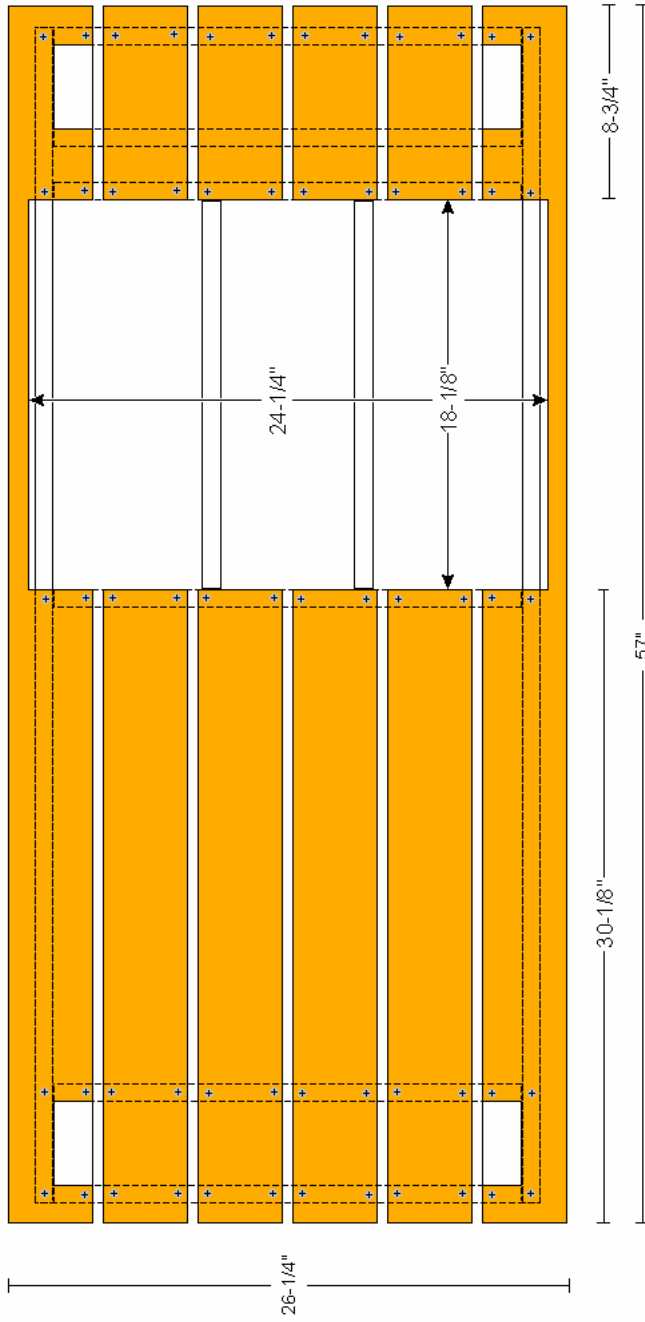
Materials list: (this page only)

- 2 - 4" x 7/8" x 55"
- 6 - 4" x 7/8" x 22-1/4"
- 2 - 4" x 7/8" x 18-1/8"
- 4 - 2" x 1" x 18-1/8" for the cleats

48 - stainless steel phillips head screws

Top View of Lower Shelf

Option "A"



Notes:

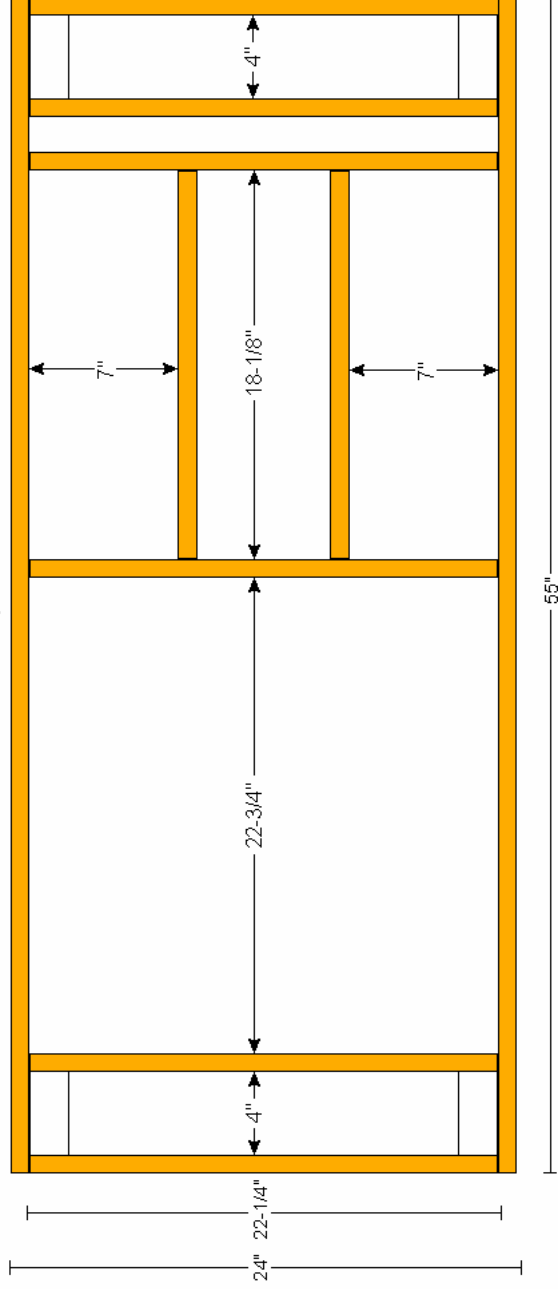
1. This is Option "A" where the opening for the sheet of slate is centered front to back, leaving a 1" strip of wood in front of and in back of the sheet. This is how I built my table, but I wish I had used Option "B" instead. Ashes get down in the gap between the front of the sheet and the wood strip, and coals fall out and burn the strip of wood.
2. The notches for the legs are just over 4" by 1-7/8". You may wish to cut and fit these after the legs are in place.
3. You may need to adjust the width of the opening for the sheet of slate by adjusting the width of the notch in the two long boards and the lengths of the shorter boards.

Materials list (this page only):

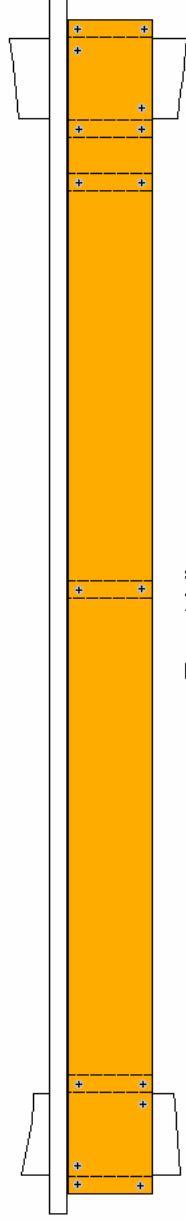
- 2 - 4" x 7/8" x 57"
- 4 - 4" x 7/8" x 30-1/8"
- 4 - 4" x 7/8" x 8-3/4"
- 60 - stainless steel phillips head screws

Lower Frame Option "A"

Top View



Front View



Notes:

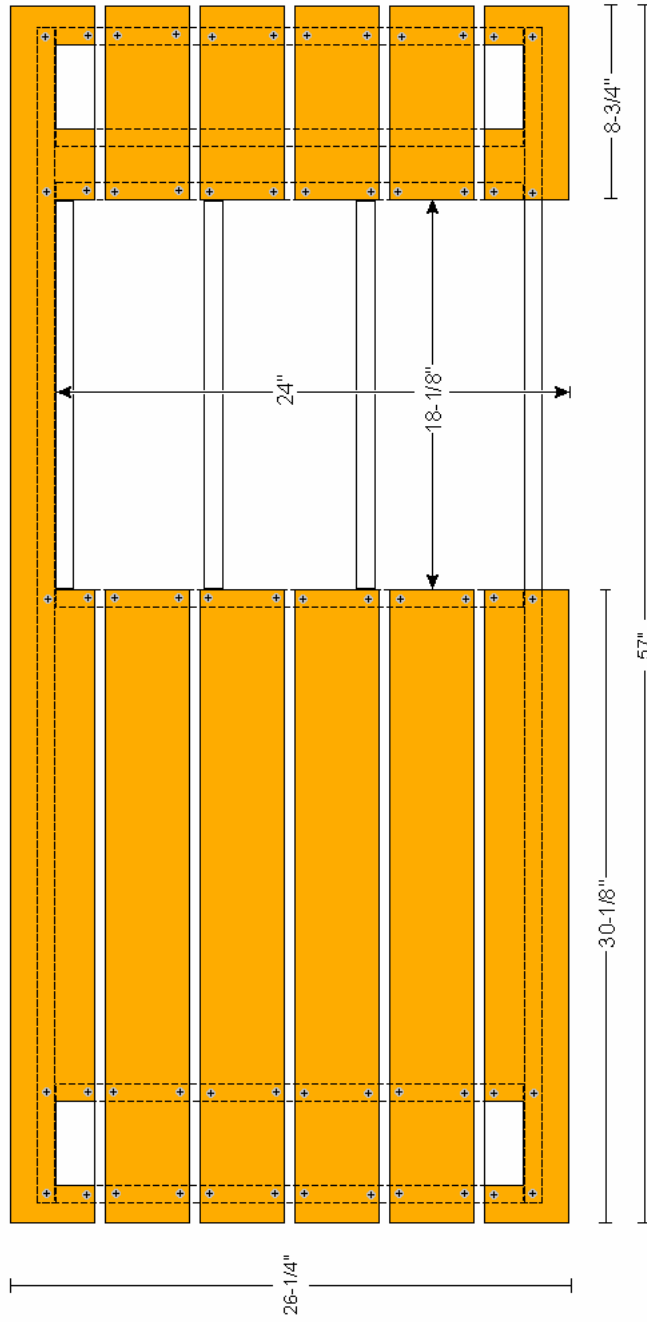
1. This lower frame plan goes with the lower shelf Option "A", plan shown on page 3. Be sure to match the right plan for the lower shelf with the right plan for the lower frame.

Materials list (this page only):

- 2 - 4" x 7/8" x 55"
- 6 - 4" x 7/8" x 22-1/4"
- 2 - 4" x 7/8" x 18-1/8"
- 40 stainless steel phillips head screws

Top View of Lower Shelf

Option "B"



Notes:

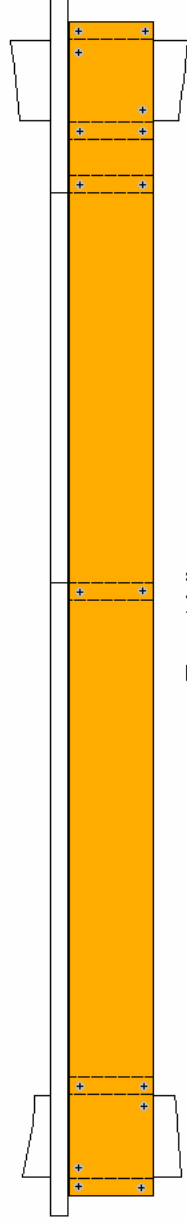
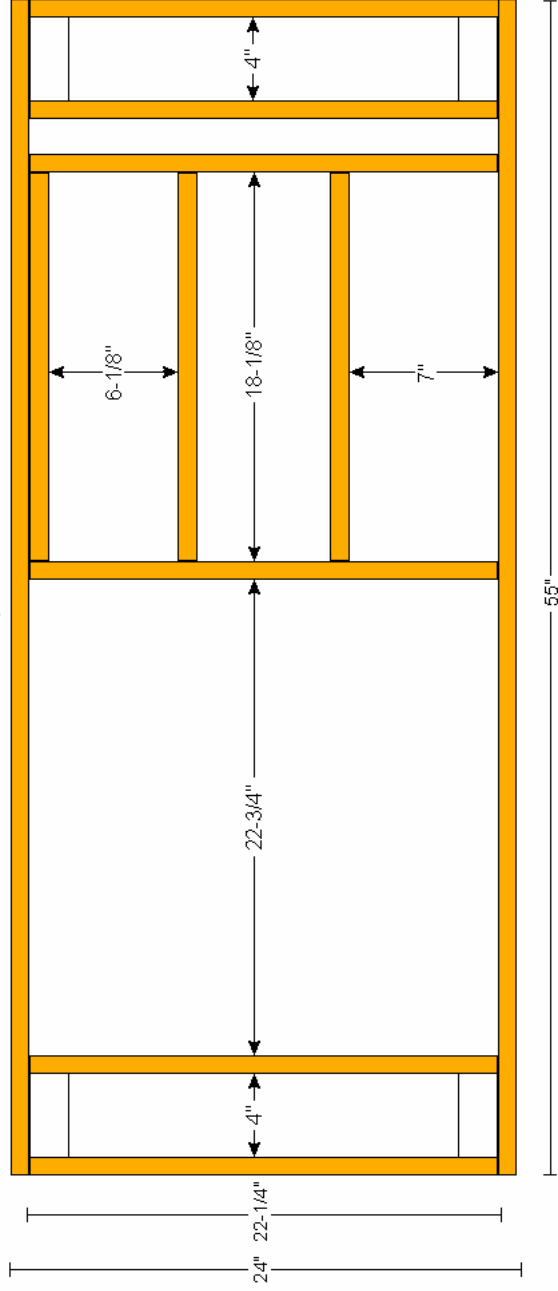
1. This is Option "B" where the opening for the sheet of slate is towards the front of the shelf, leaving a 2" strip of wood at the back of the sheet. Ashes and coals that fall out will fall onto the sheet of slate and thus not burn the wood.
2. The notches for the legs are just over 4" by 1-7/8". You may wish to cut and fit these after the legs are in place.
3. You may need to adjust the width of the opening for the sheet of slate by adjusting the width of the notch in the long board and the lengths of the shorter boards.

Materials list (this page only):

- 1 - 4" x 7/8" x 57"
- 4 - 4" x 7/8" x 30-1/8"
- 5 - 4" x 7/8" x 8-3/4"
- 60 - stainless steel phillips head screws

Lower Frame Option "B"

Top View



Front View

Notes:

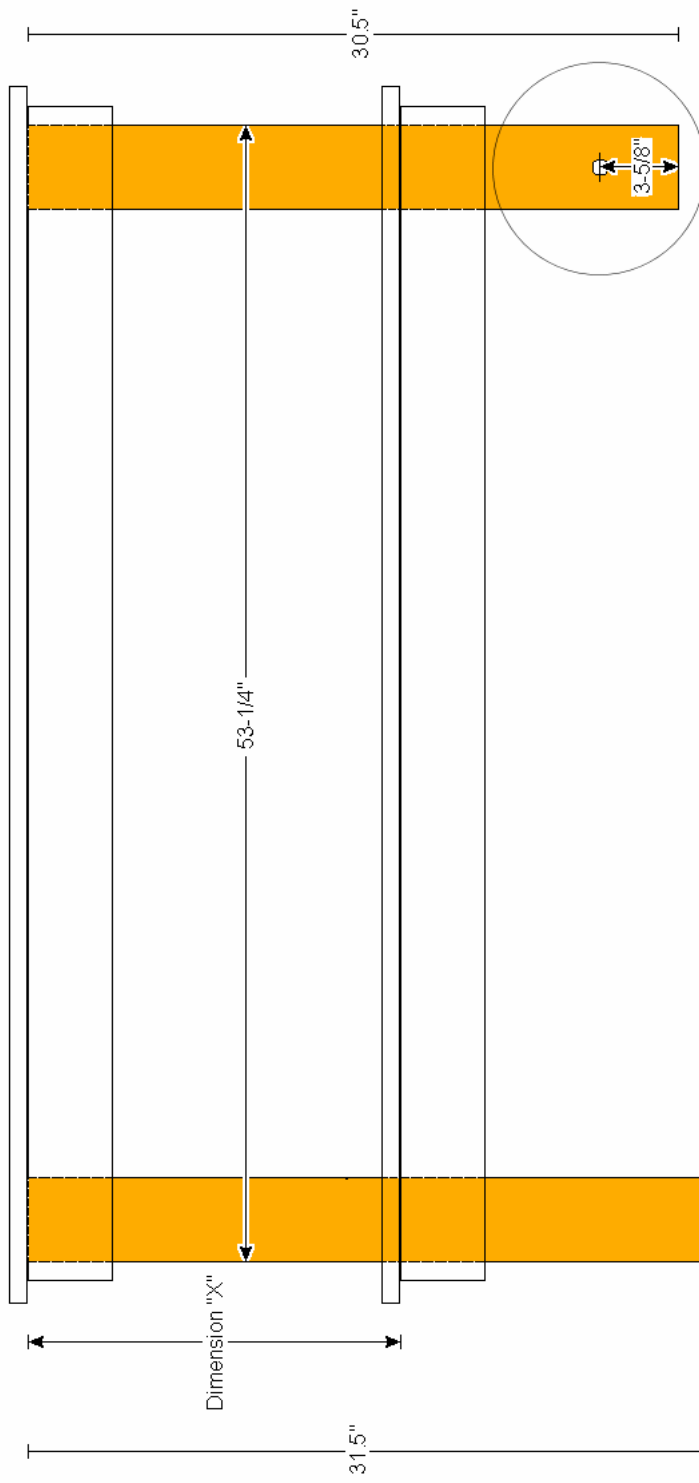
1. This lower frame plan goes with the lower shelf Option "B" plan shown on page 5. Be sure to match the right plan for the lower shelf with the right plan for the lower frame.

Materials list (this page only):

- 2 - 4" x 7/8" x 55"
- 6 - 4" x 7/8" x 22-1/4"
- 3 - 4" x 7/8" x 18-1/8"

40 stainless steel phillips head screws

Front View of Entire Table



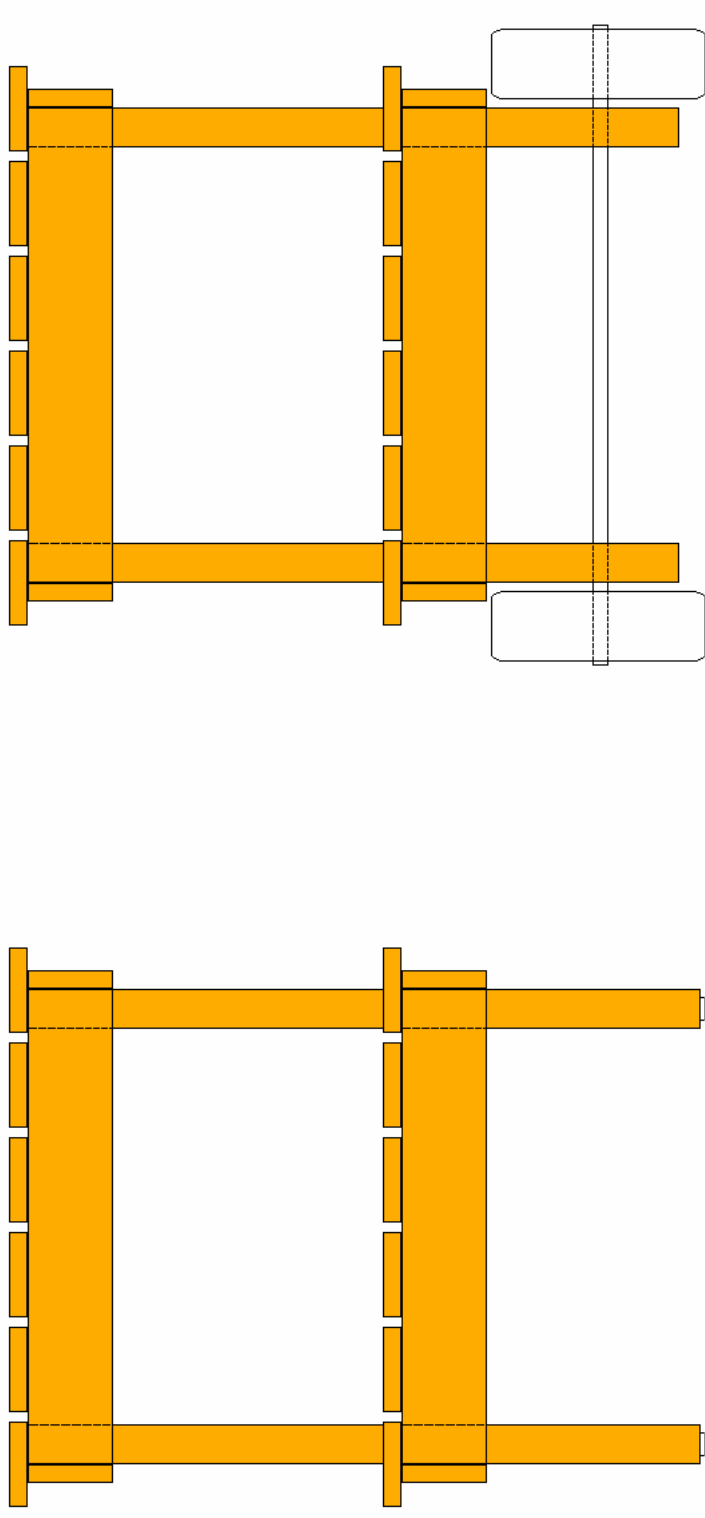
Notes:

1. The whole point of this page is to explain Dimension "X". It is measured from the top of the top frame to the top of the lower frame. (Dimension "X" is used when you attach the lower frame to the legs.) Assuming you use the ceramic feet between the sheet of slate and the cooker, Dimension "X" should be:
 17" - Large Egg with autolock hinge
 15" - Large Egg with spring hinge OR Medium Egg
 12" - Small Egg
2. The hole shown for the tire axle is 1/16" in order to accommodate a 5/8" threaded rod as an axle.

Materials list (this page only):

- 2 - 4" x 1-7/8" x 31-1/2"
- 2 - 4" x 1-7/8" x 30-1/2"
- 2 - Home Depot 10" Hand Truck Tires
- 1 - 3/8" x 5/8" threaded rod. (Will be cut to length when you install it.)
- Assorted washers and nuts for installing the tires.

End Views of Table



Notes:

1. This sheet just shows you the view from each end of the table. There are no dimensions that you haven't already seen or any parts or materials that you haven't already seen.